

SPEED COMBINED WITH AWESOMENESS

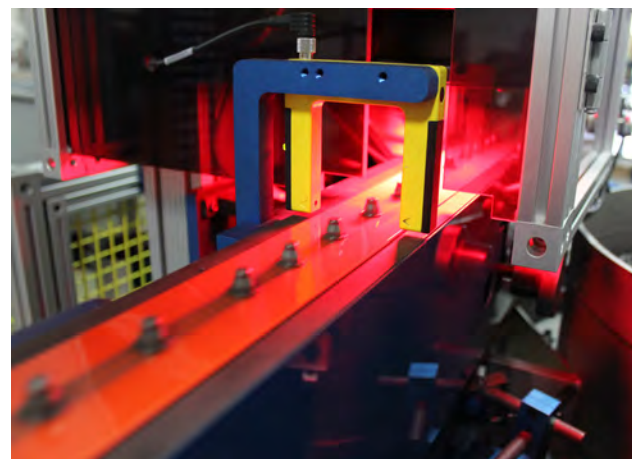
INTRODUCING THE **AV-B100 SERIES**

Conveyor Inspection Systems



This is our original design

Each AV-B100 is built on some type of conveyor system that manages and handles the parts during inspection. Each of our inspection machines is equipped with similar options, but we have found that there are advantages to separating a few of these material handling methods. This separation, when it comes to material handling, has allowed us to provide 3 different models:



AV-B100-G1

MAGNETIC BELT

AV-B100-G3

MAGNETIC BELT

AV-B100-V

V-BELT



Inspect Large Parts

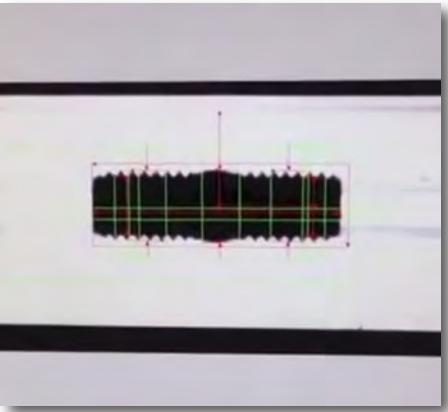
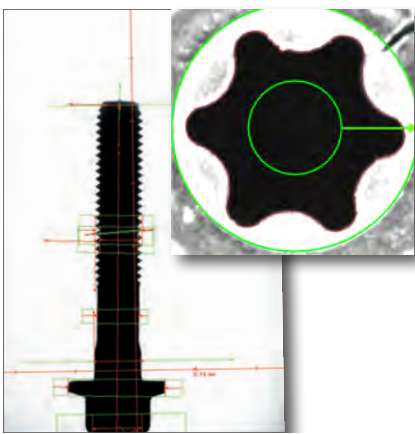
Inspect Both Sides

Headless Parts

The AV-B100-G1 is the original design for the AV-B100 Series Inspection Machine. This design carries the part on a series of conveyors to inspect the head of the part as well as the body and underside of the head. This model requires the part to be ferrous and hang by its head.

The AV-B100-G3 is based off the original design, but it has been improved to allow multiple inspections, small footprint, new options, advanced features, and a wider selection of parts. The amount of technology added to this machine makes the part change over a breeze.

The AV-B100-V is a V-Belt inspection machine designed to inspect any type of part that can lie flat in a "V" style track. While there are certain limitations to every part, this system has given us the ability to track, inspect, and sort many different type of parts that can sit in a "V".



MACHINE INFO

	AV-B100-G1	AV-B100-G3	AV-B100-V
PRODUCT	<ul style="list-style-type: none"> - Bolts - Screws - Headed Parts - Magnetic Parts - Long Parts 	<ul style="list-style-type: none"> - Bolts - Ball Studs - Screws - O-Rings - Rivets - Machined Parts - Nuts 	<ul style="list-style-type: none"> - Studs - Shafts - Couplers - Headless Parts - Pins - Unions - Ammunition
PART SPECS	Length: Up to 6" Diameter: Up to 1" Requirements: <ul style="list-style-type: none"> - Magnetic - Hang by the head 	Length - Up to 4" Diameter - Up to 2" Requirements: <ul style="list-style-type: none"> - Hang by the head must be magnetic 	Length - Up to 4" Diameter - Up to 1" Requirements: <ul style="list-style-type: none"> - Headless
MACHINE SPECS	Height: 7' Width: 10' Depth: 4' Weight: 1700 lbs. Requirements: <ul style="list-style-type: none"> - Power: 110v - Air: 85 PSI 	Height: 7' Width: 4' Depth: 4' Weight: 2400 lbs. Requirements: <ul style="list-style-type: none"> - Power: 110v - Air: 85 PSI 	Height: 7' Width: 4' Depth: 4' Weight: 2200 lbs. Requirements: <ul style="list-style-type: none"> - Power: 110v - Air: 85 PSI
PERFORMANCE	Speed: 150-500 PPM Tolerance: +/- .002" Options: <ul style="list-style-type: none"> - Packaging system - Bulk Feeding system - Head inspection - 360° Inspection - Under the head inspection - MORE! 	Speed: 350-1000 PPM Tolerance: +/- .001" Options: <ul style="list-style-type: none"> - Packaging system - Bulk Feeding system - Head inspection - 360° Inspection - Hardness Testing - MORE! 	Speed: 150-400 PPM Tolerance: +/- .001" Options: <ul style="list-style-type: none"> - Packaging system - Bulk Feeding system - Hardness Testing - MORE!

COMMON DEFECTS

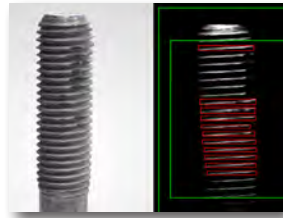
1. CRACKS

Cracks can be tricky. We use vision to remove this defect.



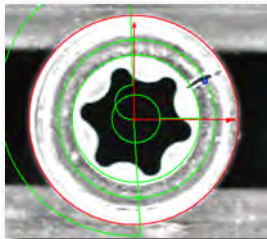
2. THREADS

MIN/MAX thread pitch, Spiral threads, damaged threads, etc.



3. HEAD INSPECTION

Torx® recess Inspection, plating build up, broken punch, etc.



4. BODY PROFILE

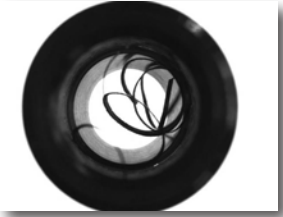
Check dimensional characteristics from a view of the body profile.



Torx® is a registered trademark of Acument Intellectual Properties, LLC

5. FOREIGN MATERIAL

Check to make sure there is no foreign material getting through.



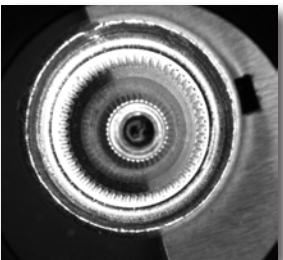
6. OCR

Read part codes, head markings, numbers, letters, and more.



7. 360° INSPECTION

Trace internal threads, look for surface defects, and more.



8. PLATING PRESENCE

Determine if your parts have been plated properly.

