



# *Attica* **Automation**

SEEING BEYOND THE HORIZON

WE DELIVER

**QUALITY SOLUTIONS**

INSPECTION | ASSEMBLY | PACKAGING | FEEDING



[www.atticaautomation.com](http://www.atticaautomation.com)



[sales@atticaautomation.com](mailto:sales@atticaautomation.com)



(844) 273-5151



## A LITTLE BIT **ABOUT US**

Established in 1999, Attica Automation has become a leader in providing solutions for our client. Our drive for quality and precision combined with our love of technology gives us the upper hand when it comes to inspection and quality. Our knowledge of the industry and care for our clients also gives us the ability to excel above the competition.

*"If you need a machine and don't buy it, then you will ultimately find that you have paid for it and don't have it."*

(Henry Ford)

## OUR INCREDIBLE **INSPECTION SOLUTIONS**

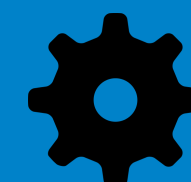
Over the years, each of our machine models have been upgraded and refined to bring you the best in the business.

### ***ATTICA VISION™ SYSTEMS*** ***(VISION INSPECTION)***



#### **AV-B100 SERIES**

Conveyor style material handling



#### **AV-D100 SERIES**

Rotary dial style material handling



#### **AV-R100 SERIES**

Robotic material handling

The AV-B100 is a turn-key inspection and sorting system designed around the use of the conveyor as the primary material handling and part presentation system. What sets each model apart is the method that each machine uses to perform these operations.

Each model in the AV-D100 series incorporates a rotary dial to perform the material handling and part presentation. These dials have many different options including the following: indexing and continuous dials, steel and poly slotted dials, and poly flat dials.

Robotics allows us to inspect those "hard to handle" parts. These systems include any type of robotic material handling including high speed, multi-axis robots to simple "Pick and Place" robots. These systems also allow us to combine many different processes into one.



## GET HELP FROM **SUPPORT EXPERTS**

Downtime is not an acceptable option for us. Making sure your machine is in production is our priority.

### Under Promise

No one likes being lied to. Neither do we. That is why we have built our company on the motto:

### “Under Promise ...Over Deliver”

When a client connects with us for any type of request, our response is a “promise”. Whether support, service, sales, or marketing, we take our promises very seriously. We spend the needed time to test and verify that we came do what we promise. As we continue to support our clients, this belief has continued to benefit each of our clients which, in turn, benefits us.

### Over Deliver

Now that the promise has been made, we can deliver. Our service and support group has the experience and knowledge to resolve any type of issue including:

- Upgrades
- Programming
- Machine Control
- Training
- Replacement Items
- Electrical Troubleshooting
- Testing and verification
- Whatever you need!

We take the time to look at your needs and find the best solution in the shortest amount of time. We are here to make your life easier so you don't have to be the expert.

*The golden rule for every business man is this:  
“Put yourself in your customer's place.”*

(Orison Swett Marden)

## ABOUT OUR **WARRANTY & SERVICE**



### MANUFACTURER'S WARRANTY

Each and every one of our machines comes with a one year manufacturer's warranty to guarantee that the machine will perform as promised.



### REMOTE TECHNICAL SUPPORT

Don't wait for support. We have designed each machine to allow us to give you full support from our headquarters. As long as you have internet access, we can perform support, upgrades, programming, motion control, and more!



### ONSITE SERVICE AND SUPPORT

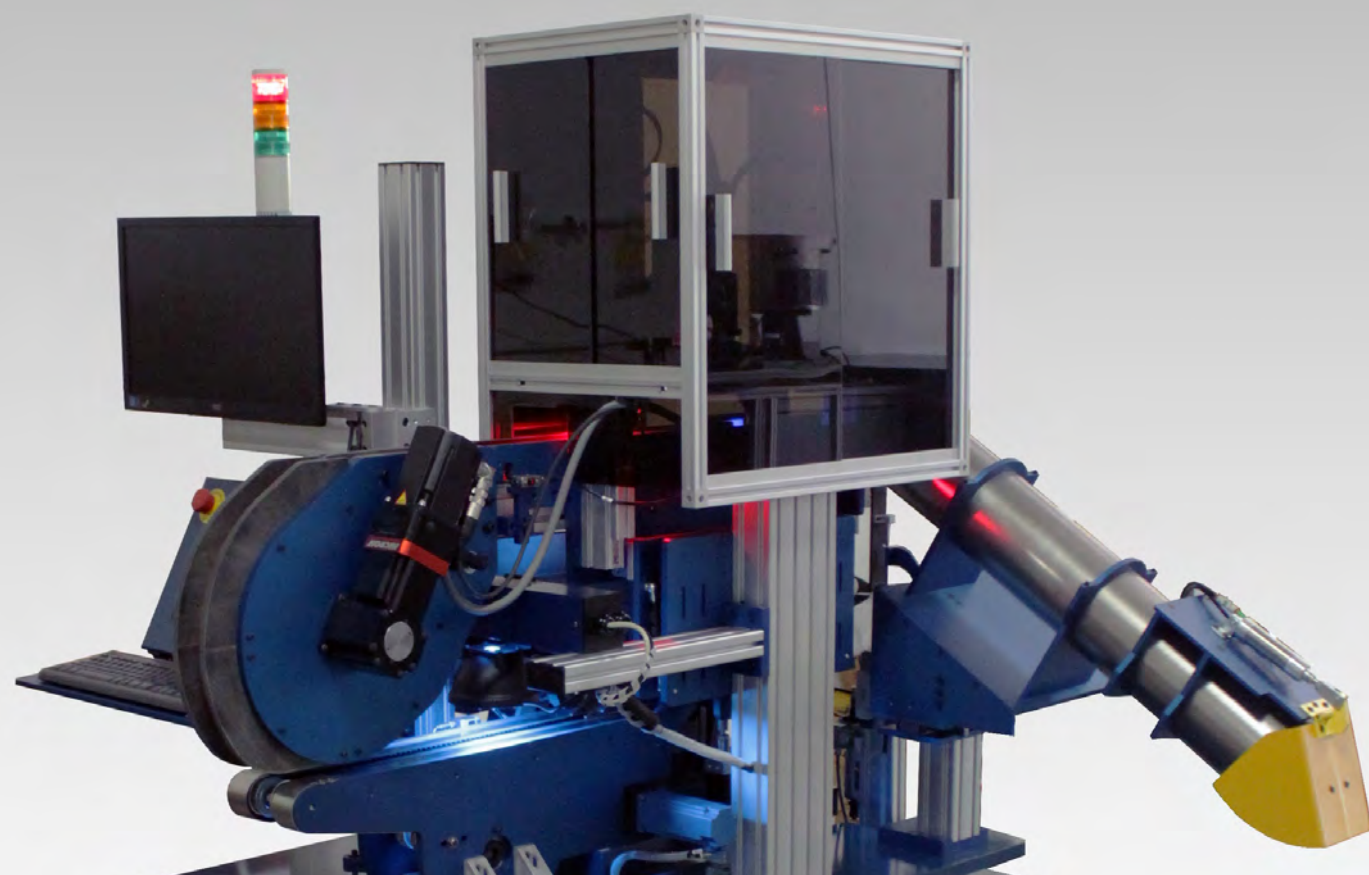
In those rare cases that you need us to come onsite, we have a fully functional support group ready to service your needs. Whether you need programming, replacement parts, or custom upgrades, we are there to make it happen.



### ADVISING & CONSULTING

Customer service is key. Each of our groups has the expertise to find a solution. Whether Sales, Service, or Support, we are here to make it happen.





*SPEED COMBINED WITH AWESOMENESS*

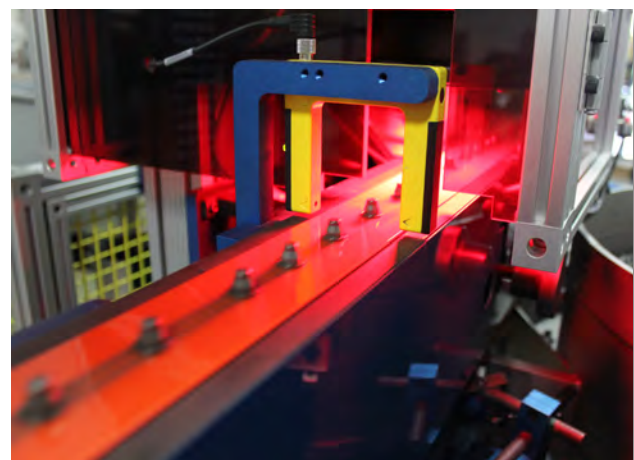
## INTRODUCING THE **AV-B100 SERIES**

Conveyor Inspection Systems



### **This is our original design**

Each AV-B100 is built on some type of conveyor system that manages and handles the parts during inspection. Each of our inspection machines is equipped with similar options, but we have found that there are advantages to separating a few of these material handling methods. This separation, when it comes to material handling, has allowed us to provide 3 different models:



### **AV-B100-G1** MAGNETIC BELT



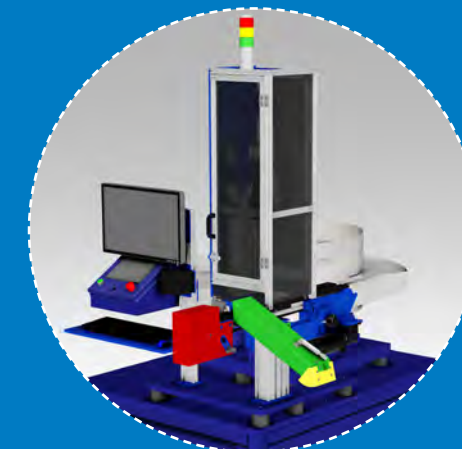
Inspect  
Large Parts

### **AV-B100-G3** MAGNETIC BELT



Inspect  
Both Sides

### **AV-B100-V** V-BELT

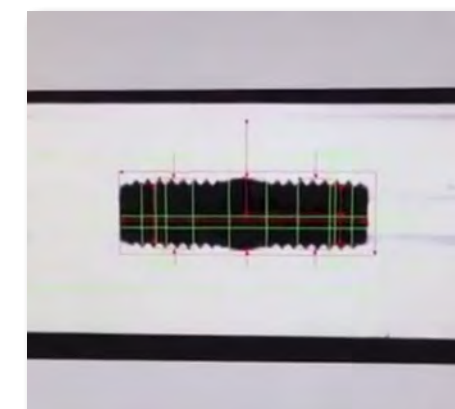
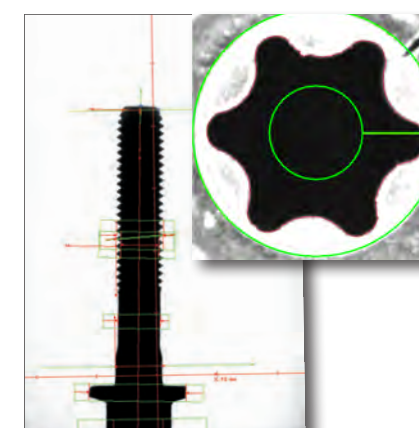


Headless  
Parts

The AV-B100-G1 is the original design for the AV-B100 Series Inspection Machine. This design carries the part on a series of conveyors to inspect the head of the part as well as the body and underside of the head. This model requires the part to be ferrous and hang by its head.

The AV-B100-G3 is based off the original design, but it has been improved to allow multiple inspections, small footprint, new options, advanced features, and a wider selection of parts. The amount of technology added to this machine makes the part change over a breeze.

The AV-B100-V is a V-Belt inspection machine designed to inspect any type of part that can lie flat in a "V" style track. While there are certain limitations to every part, this system has given us the ability to track, inspect, and sort many different type of parts that can sit in a "V".





MACHINE INFO

	AV-B100-G1	AV-B100-G3	AV-B100-V
PRODUCT PART SPECS MACHINE SPECS PERFORMANCE	<ul style="list-style-type: none"><li>- Bolts</li><li>- Screws</li><li>- Headed Parts</li><li>- Magnetic Parts</li><li>- Long Parts</li></ul>	<ul style="list-style-type: none"><li>- Bolts</li><li>- Ball Studs</li><li>- Screws</li><li>- O-Rings</li><li>- Rivets</li><li>- Machined Parts</li><li>- Nuts</li></ul>	<ul style="list-style-type: none"><li>- Studs</li><li>- Shafts</li><li>- Couplers</li><li>- Headless Parts</li><li>- Pins</li><li>- Unions</li><li>- Ammunition</li></ul>
	Length: Up to 6" Diameter: Up to 1" Requirements: <ul style="list-style-type: none"><li>- Magnetic</li><li>- Hang by the head</li></ul>	Length - Up to 4" Diameter - Up to 2" Requirements: <ul style="list-style-type: none"><li>- Hang by the head must be magnetic</li></ul>	Length - Up to 4" Diameter - Up to 1" Requirements: <ul style="list-style-type: none"><li>- Headless</li></ul>
	Height: 7' Width: 10' Depth: 4' Weight: 1700 lbs. Requirements: <ul style="list-style-type: none"><li>- Power: 110v</li><li>- Air: 85 PSI</li></ul>	Height: 7' Width: 4' Depth: 4' Weight: 2400 lbs. Requirements: <ul style="list-style-type: none"><li>- Power: 110v</li><li>- Air: 85 PSI</li></ul>	Height: 7' Width: 4' Depth: 4' Weight: 2200 lbs. Requirements: <ul style="list-style-type: none"><li>- Power: 110v</li><li>- Air: 85 PSI</li></ul>
	Speed: 150-500 PPM Tolerance: +/- .002"	Speed: 350-1000 PPM Tolerance: +/- .001"	Speed: 150-400 PPM Tolerance: +/- .001"
	Options: <ul style="list-style-type: none"><li>- Packaging system</li><li>- Bulk Feeding system</li><li>- Head inspection</li><li>- 360° Inspection</li><li>- Under the head inspection</li><li>- MORE!</li></ul>	Options: <ul style="list-style-type: none"><li>- Packaging system</li><li>- Bulk Feeding system</li><li>- Head inspection</li><li>- 360° Inspection</li><li>- Hardness Testing</li><li>- MORE!</li></ul>	Options: <ul style="list-style-type: none"><li>- Packaging system</li><li>- Bulk Feeding system</li><li>- Hardness Testing</li><li>- MORE!</li></ul>

COMMON DEFECTS

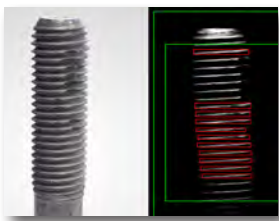
1. CRACKS

Cracks can be tricky. We use vision to remove this defect.



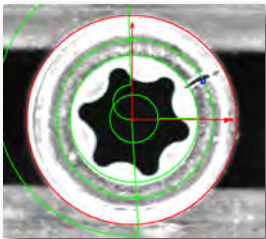
2. THREADS

MIN/MAX thread pitch, Spiral threads, damaged threads, etc.



3. HEAD INSPECTION

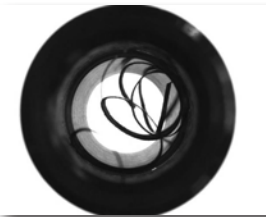
Torx® recess Inspection, plating build up, broken punch, etc.



Torx® is a registered trademark of Acument Intellectual Properties, LLC.

5. FOREIGN MATERIAL

Check to make sure there is no foreign material getting through.



4. BODY PROFILE

Check dimensional characteristics from a view of the body profile.



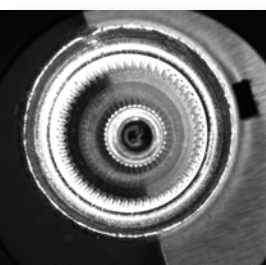
6. OCR

Read part codes, head markings, numbers, letters, and more.



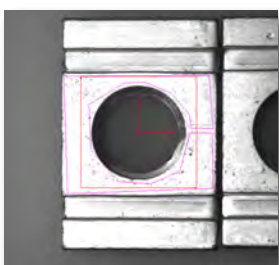
7. 360° INSPECTION

Trace internal threads, look for surface defects, and more.



8. PLATING PRESENCE

Determine if your parts have been plated properly.







MORE OPTIONS | MORE FLEXIBILITY | MORE PRODUCTIVITY

## ABOUT OUR **AV-D100 SERIES**

### Rotary Dial Inspection Systems

#### Inspection | Assembly | Customizable

Every machine built today has a designed purpose with desired results. To make a machine that “can do it all” would be virtually impossible, but the goal of the AV-D100 series is to allow for the most customization possible.

Over the years, we have standardized this machine and created a long list of options and customizations to give our clients the best machine possible. The AV-D100 series is a rotary dial system that rotates the parts and presents them to multiple stations. This allows us to use this series for inspection, assembly, automation, manufacturing, and more!

In accomplishing this goal, we have separated this series of inspection machines into two different models:



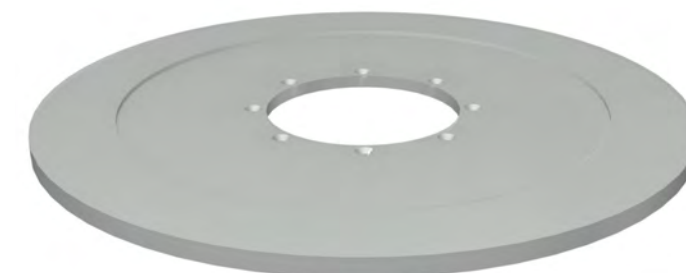
### **AV-D100-S** SLOTTED DIAL



#### POLY AND STEEL DIALS



### **AV-D100-F** FLAT DIAL



#### POLY DIALS



# MACHINE INFO

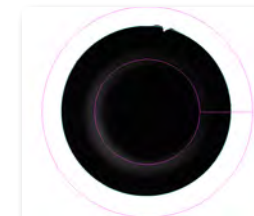
PRODUCT PART SPECS MACHINE SPECS PERFORMANCE

AV-D100-S	AV-D100-F
<ul style="list-style-type: none"><li>- Bolts</li><li>- Ball Studs</li><li>- Screws</li><li>- Nuts</li><li>- Rivets</li><li>- Machined Parts</li><li>- More!</li></ul>	<ul style="list-style-type: none"><li>- Washers</li><li>- Nuts</li><li>- O-Rings</li><li>- Machined Parts</li><li>- Coins</li><li>- Ammunition</li><li>- More!</li></ul>
Length: Up to 10" Diameter: Up to 1.5" Requirements: <ul style="list-style-type: none"><li>- Fit in a slot or Hang by the head</li></ul>	Length - Up to 3" Diameter - Up to 3" Requirements: <ul style="list-style-type: none"><li>- Sit on a flat surface</li></ul>
Height: 7' Width: 10' Depth: 4' Weight: 1900 lbs. Requirements: <ul style="list-style-type: none"><li>- Power: 110v</li><li>- Air: 85 PSI</li></ul> (Includes Feeding)	Height: 7' Width: 10' Depth: 4' Weight: 1700 lbs. Requirements: <ul style="list-style-type: none"><li>- Power: 110v</li><li>- Air: 85 PSI</li></ul> (Includes Feeding)
Speed: 150-500 PPM Tolerance: +/- .001"	Speed: 250-700 PPM Tolerance: +/- .001"
Options: <ul style="list-style-type: none"><li>- Packaging system</li><li>- Bulk Feeding system</li><li>- Head inspection</li><li>- 360° Inspection</li><li>- MORE!</li></ul>	Options: <ul style="list-style-type: none"><li>- Packaging system</li><li>- Bulk Feeding system</li><li>- Head inspection</li><li>- Surface inspection</li><li>- Hardness Testing</li><li>- MORE!</li></ul>

# COMMON DEFECTS

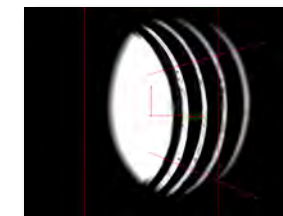
## 1. CRACKS

Cracks can be tricky. We use vision to remove this defect.



## 2. THREADS

MIN/MAX thread pitch, Spiral threads, damaged threads, etc.



## 3. SURFACE DEFECTS

Dented parts, markings, plating problems, and more.



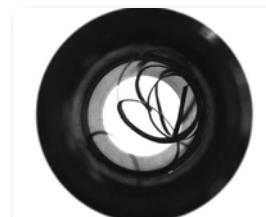
## 4. BODY PROFILE

Check dimensional characteristics from a profile of the body.



## 5. FOREIGN MATERIAL

Check to make sure there is no foreign material getting through.



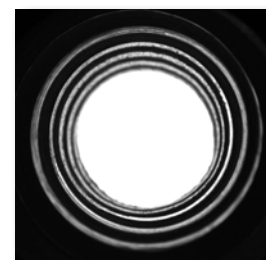
## 6. OCR

Read part codes, head markings, numbers, letters, and more.



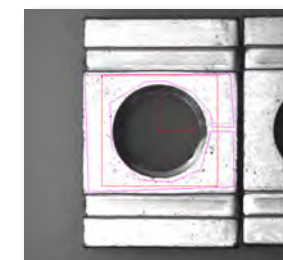
## 7. 360° INSPECTION

Trace internal threads, look for surface defects, and more.



## 8. PLATING PRESENCE

Determine if your parts have been plated properly.

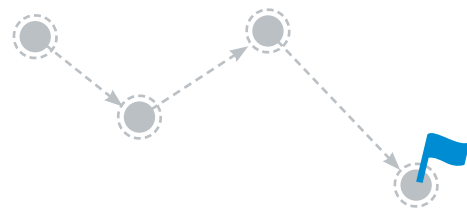






ROBOTICS | ASSEMBLY | INSPECTION

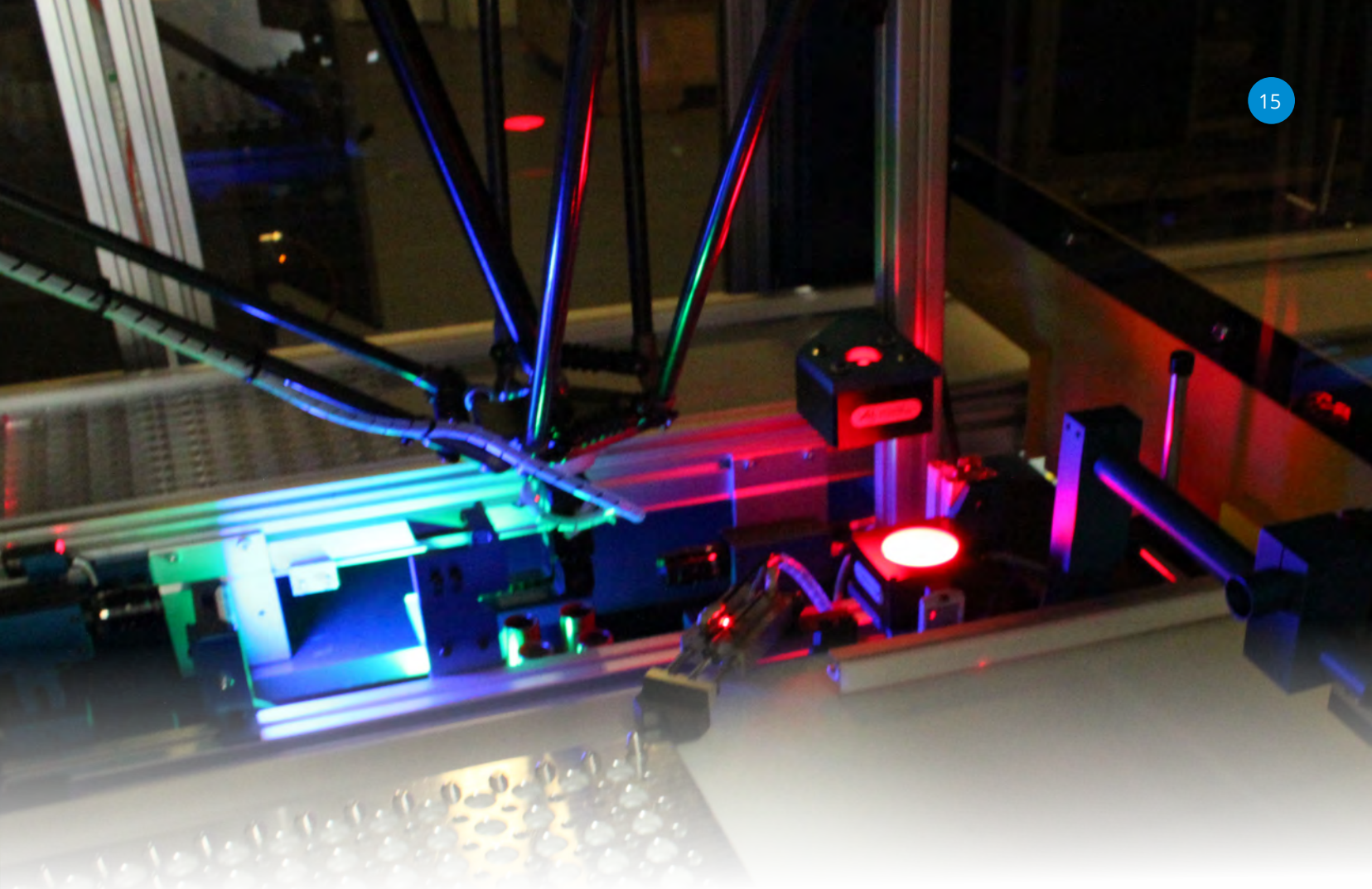
HERE IS OUR  
**AV-R100 SERIES**



Combine Multiple Steps Into One

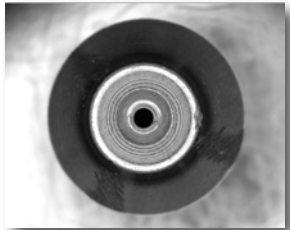
While many of our product lines are designed to fit a wide variety of parts, we still see the need for more flexibility and options for our clients. That is why we have created the AV-R100 Series Robotic Inspection Systems.

The AV-R100 Series is the best of both worlds. It allows us to combine multiple processes into a single solution. Using many different types of robotics, this machine series allows us to provide a solution to the toughest issues our clients run into.



**1. INSPECTION**

Incorporates multiple inspection stations and technologies:



**2. PRODUCTION**

Add assembly or formation processes to your inspection:



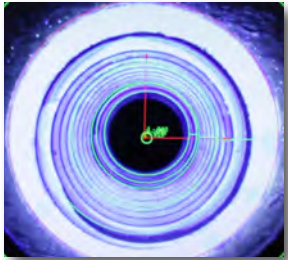
**3. PACKAGING**

Individual or bulk packaging can be included in this system:



**4. FLUID APPLICATION**

Fluid application can be used for production and marking:



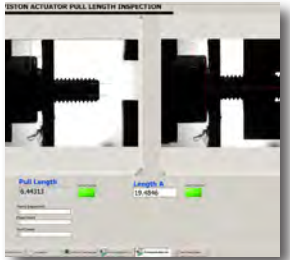
**5. STAKING**

Allows you to add production processes to a single system:

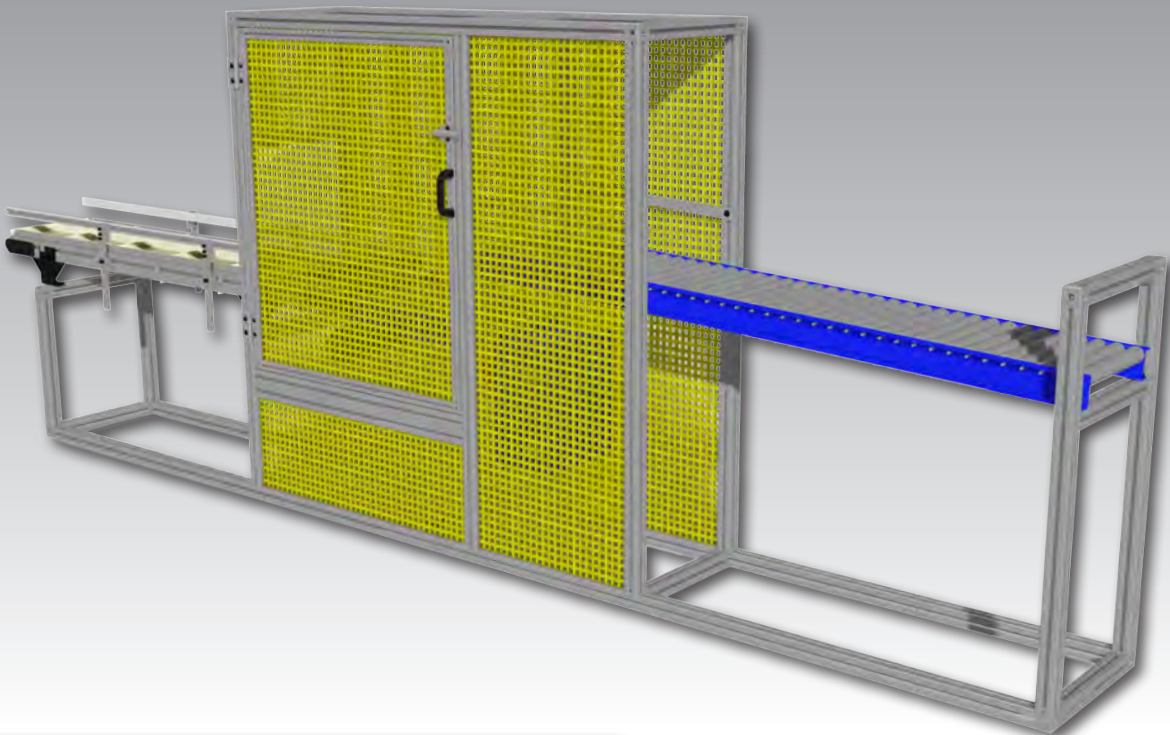
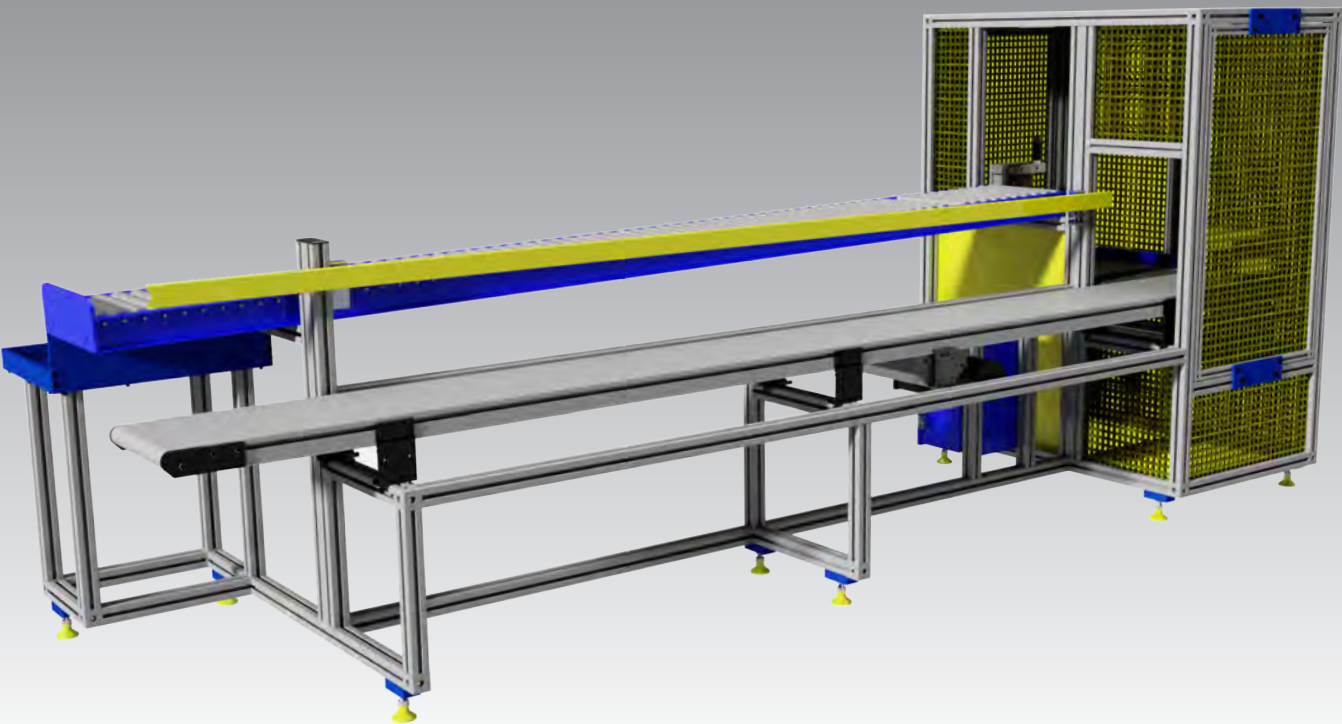


**6. PHYSICAL TESTING**

Add testing for torque, load, pressures, pull tests, and more!

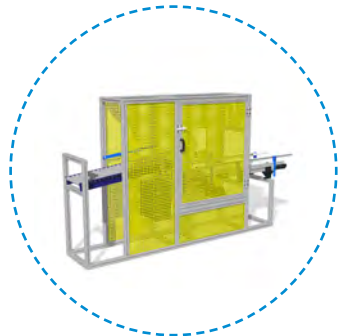






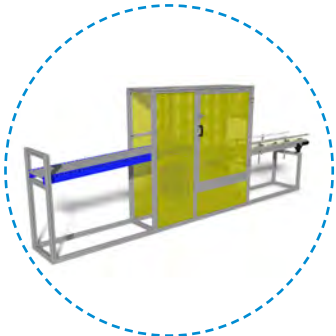
AP SERIES | PACKAGING | HANDLING | COUNTING

**AP-C100C**  
COMPACT CONVEYOR



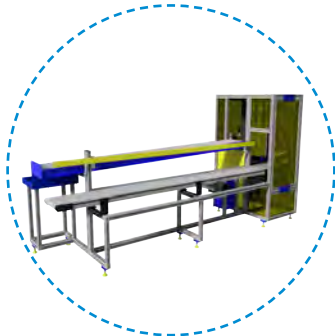
The AP-C100C is our most compact packaging system. Since we see a large variation in box sizes (corrugated and reusable), we have had to find a solution for those “tight” applications. The AP-C100C is the perfect solution when you do not have a lot of room.

**AP-C100**  
LONG CONVEYOR



The AP-C100 is our standardized packaging and handling system. This system works with the inspection system to count your batch, index the boxes, and advance the next box in place. This system allows the machine to continue to run while you bring in new boxes.

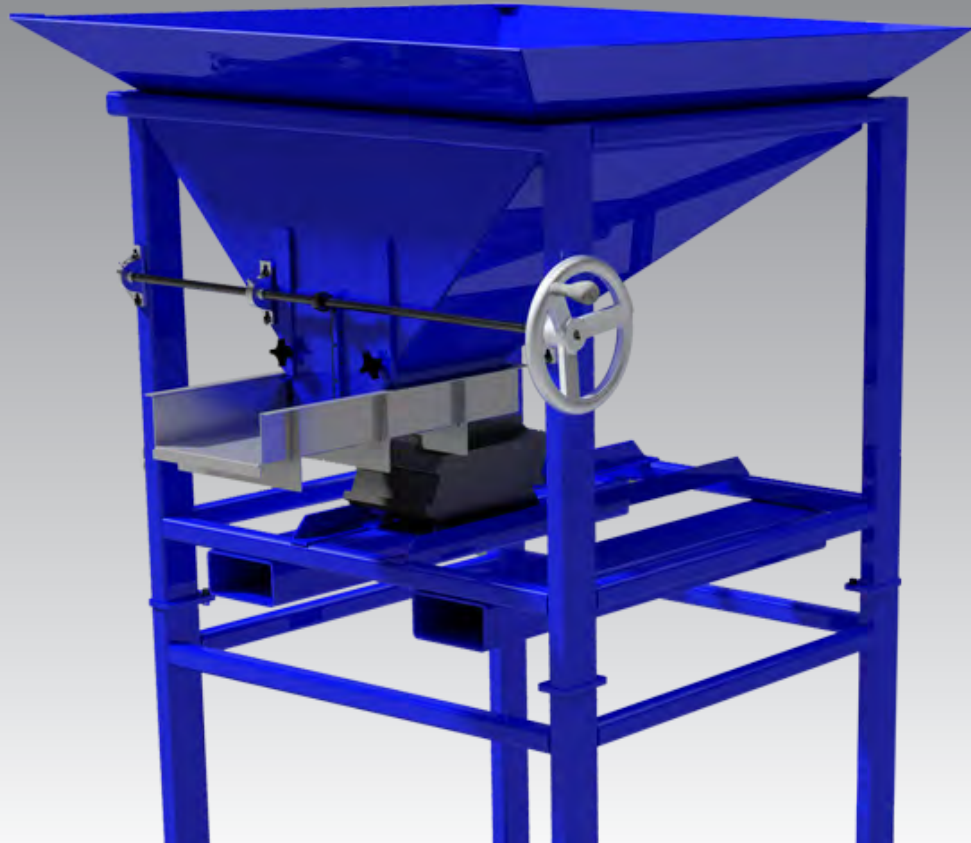
**AP-C200**  
DUAL CONVEYOR



The AP-C200 is our “side-by-side” packaging system that allows for a large amount of boxes to be setup at one time. This side by side system has a larger footprint, but it allows the user to walk away from the machine while the machine continues to box your product.







AF SERIES | FEEDING | BULK LOADING

**AF-G100**  
GRAVITY FED



The AF-G100 is a gravity fed bulk feeding system that incorporates into each of our inspection systems. Designed to be loaded with a fork lift, this system can be controlled through the system, or it can be setup as an independent feeding system.

**AF-H100**  
HYDRAULIC FED

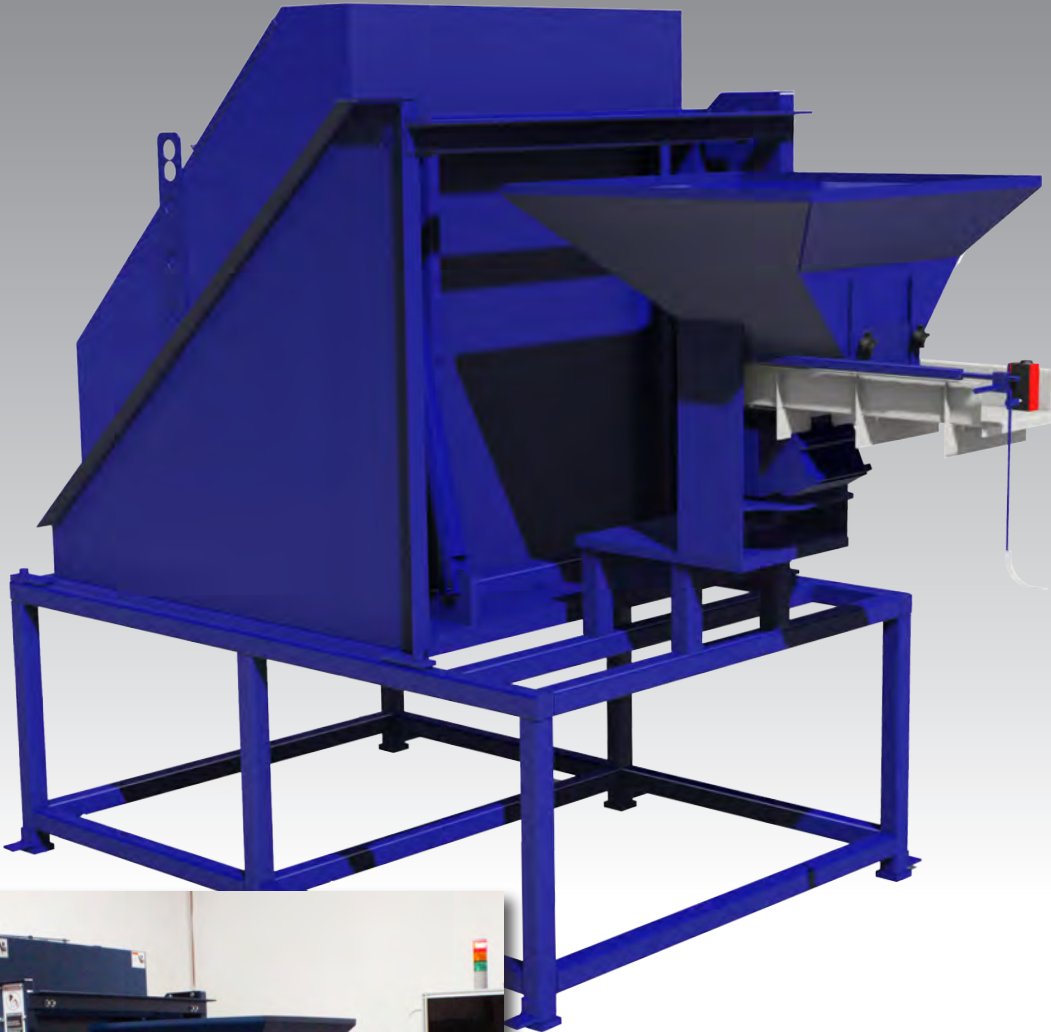


The AF-H100 is based off the original design of the G100, but it adds the hydraulic lift feature allowing you to load the unit as ground level. From here, the unit will swing and load the inspection machine without any interaction from the operator.

**AF-C100**  
CONVEYOR FED



The AF-C100 is our bulk feeding system that uses a conveyor to transfer the parts. Some of the many options of the AF-C100 include magnetic conveyors, cleated conveyors, steps conveyors, and more. This system allows us to provide another loading option.





SO WHY WAIT?  
**GET IN TOUCH**



**Attica**  
**Automation**



3275 Metamora Rd. Oxford, MI 48371 USA



Toll (844) 273-5151 | Local (248) 236-2454



[sales@atticaautomation.com](mailto:sales@atticaautomation.com)



[www.atticaautomation.com](http://www.atticaautomation.com)

SEEING BEYOND THE HORIZON

